

EVALUATION OF COURSES AND FACULTY AT THE DEPARTMENT OF PHYSICS, AUTH

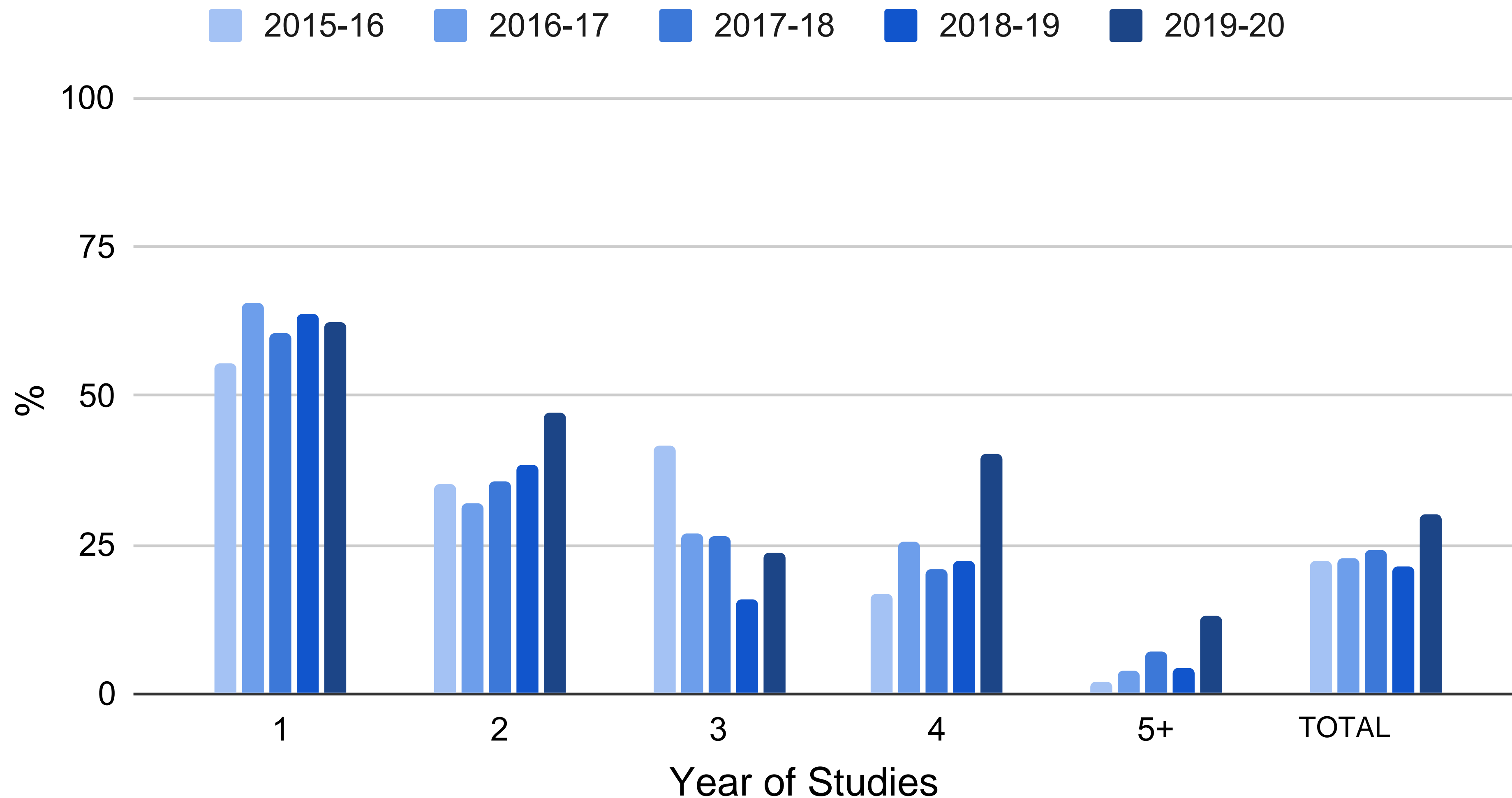
INTERNAL EVALUATION COMMITTEE OF THE DEPARTMENT OF PHYSICS

ARISTOTLE UNIVERSITY OF THESSALONIKI



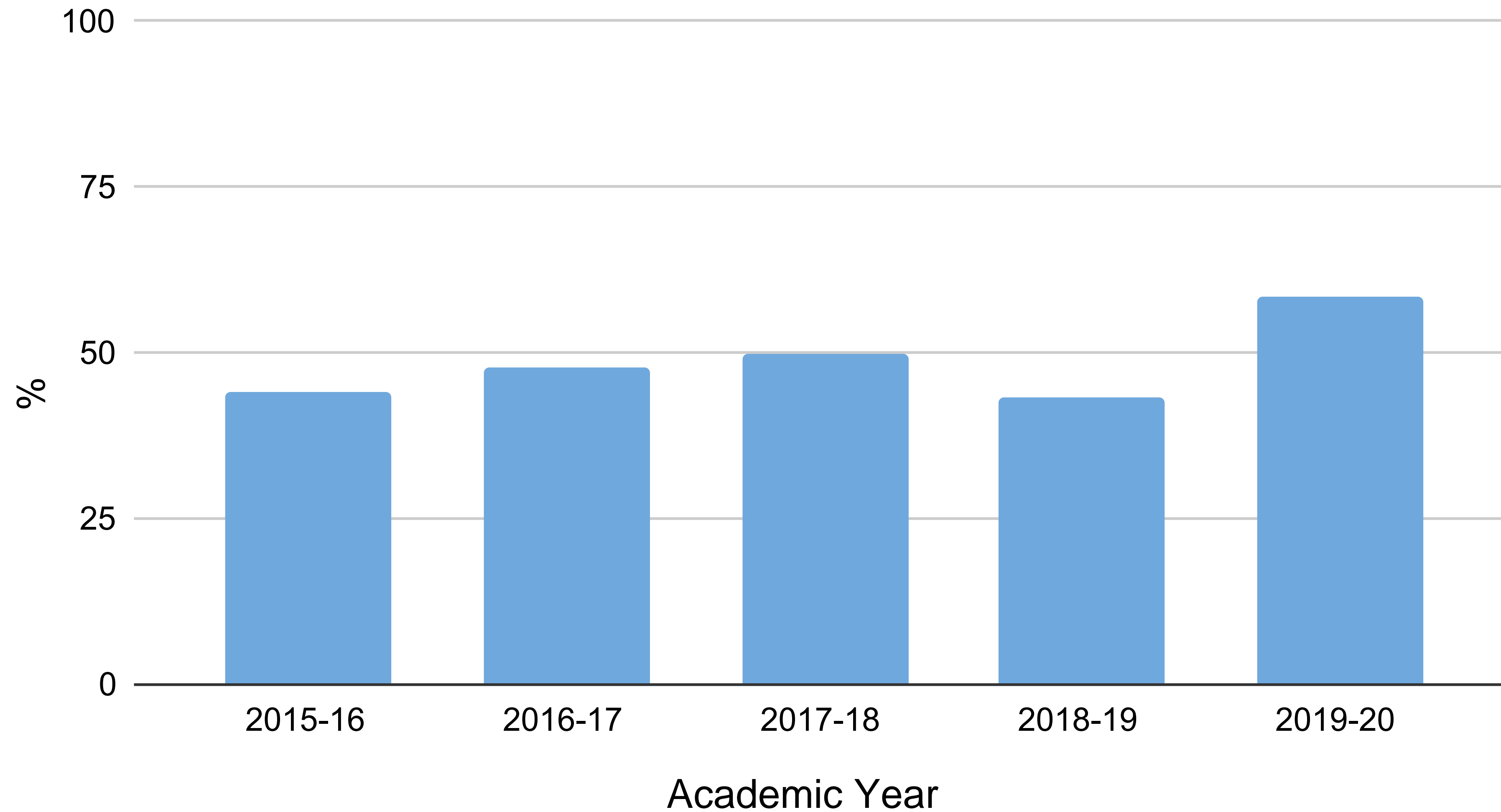
PERCENTAGE OF STUDENTS PARTICIPATING IN THE EVALUATIONS

Percentage of registered students in each year of studies that participated in the evaluations of course and faculty members in the last five years.



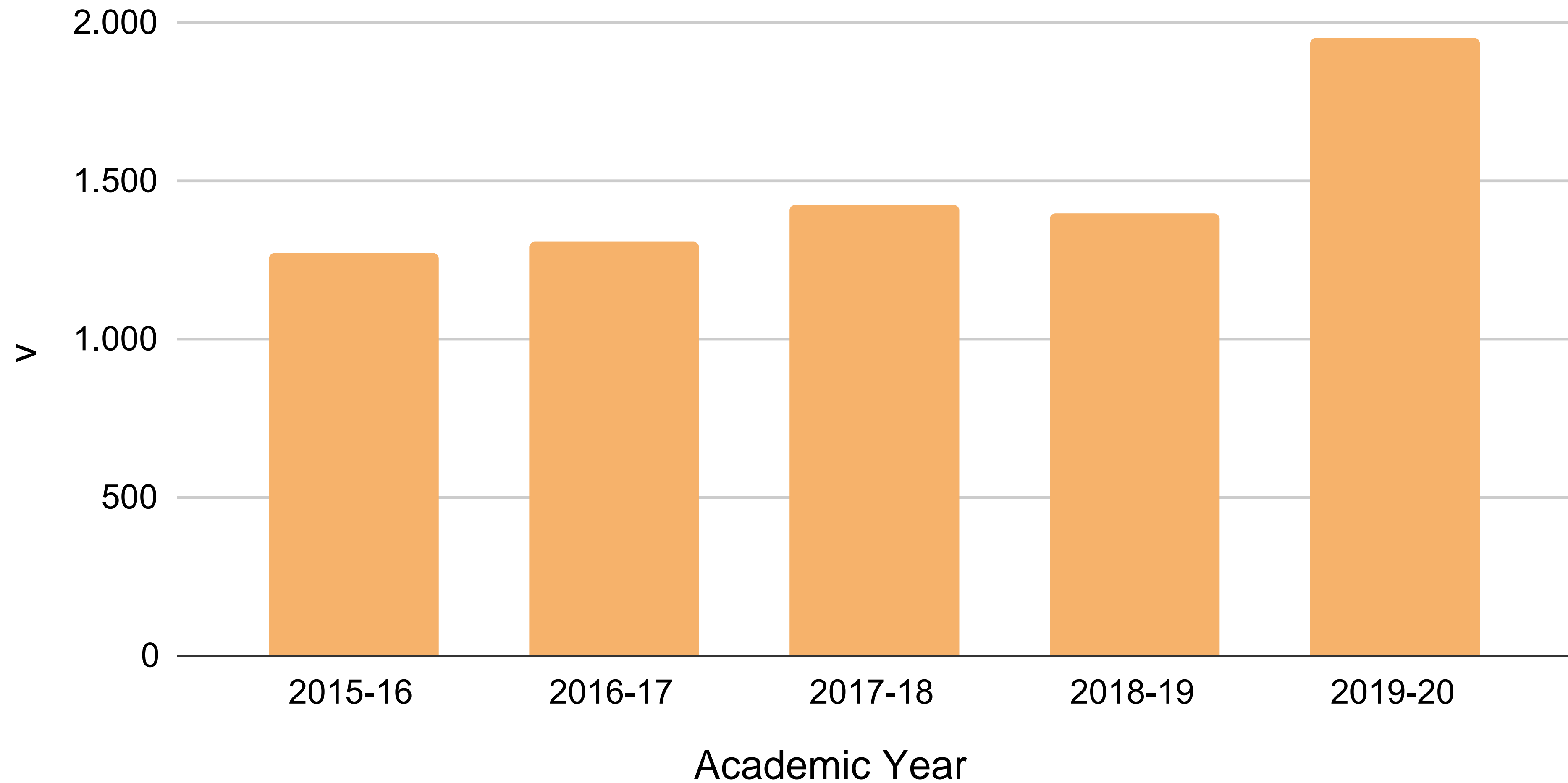
PERCENTAGE OF COURSES THAT WERE EVALUATED

Percentage of course (out of all courses offered in the undergraduate program) that was evaluated by students in the last five years.



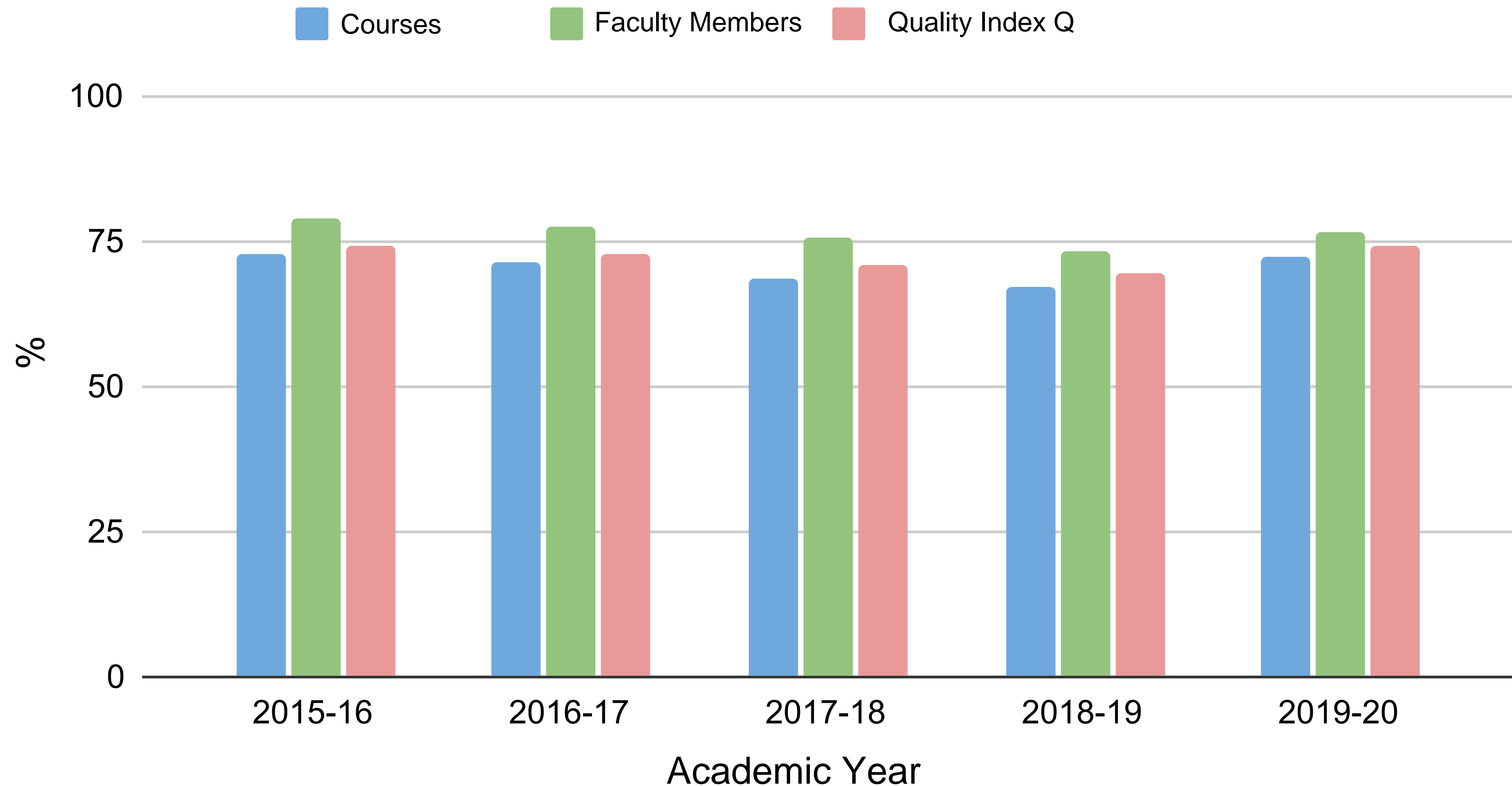
NUMBER OF EVALUATIONS

Total number of evaluations of courses/faculty members by students in the last five years.



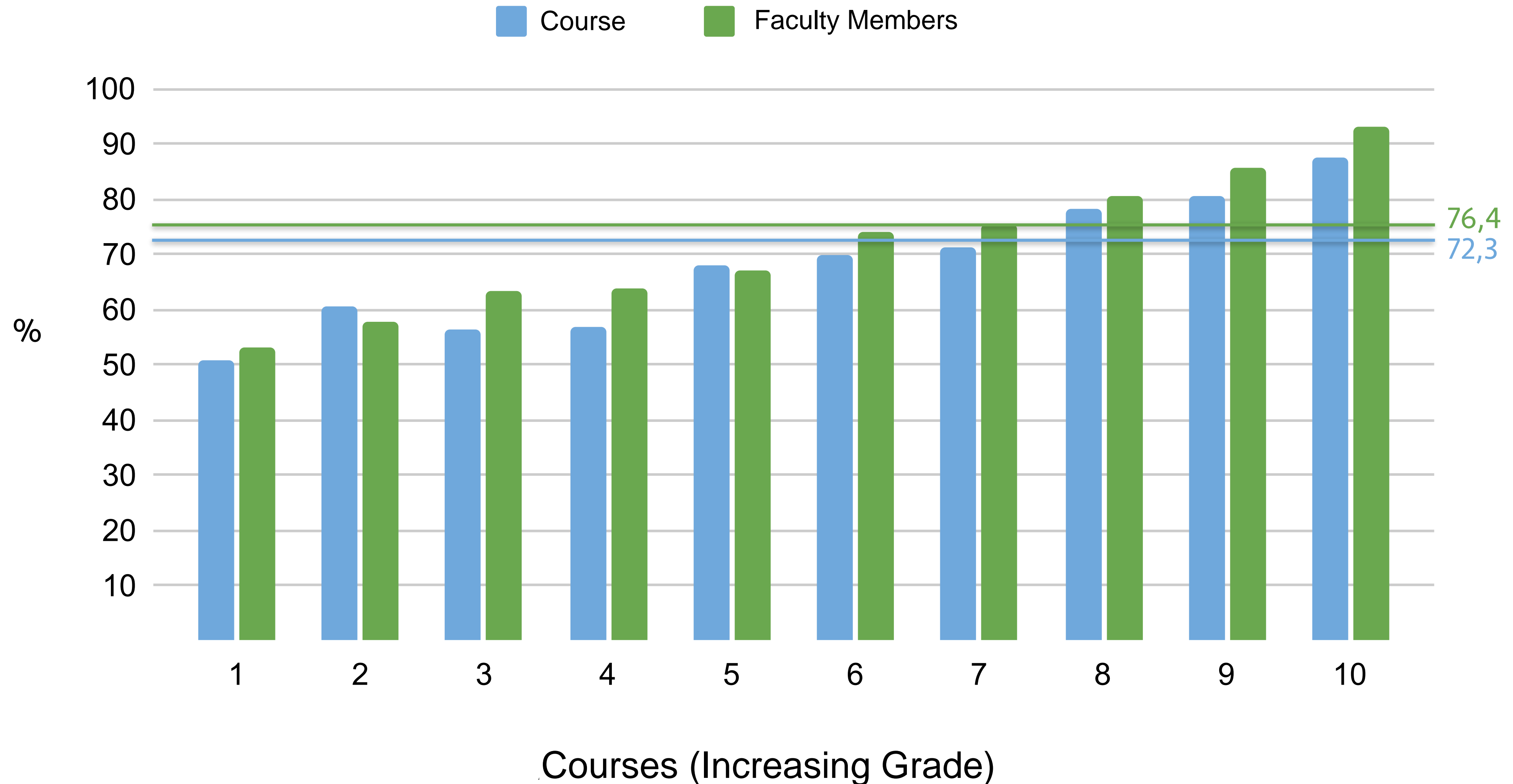
AVERAGE GRADE OF EVALUATIONS AND QUALITY INDEX

Average grade (in %) given in the evaluations of courses and faculty members and Quality Index Q as defined by the Quality Assurance Unit (MODIP) of AUTH, in the last five years.



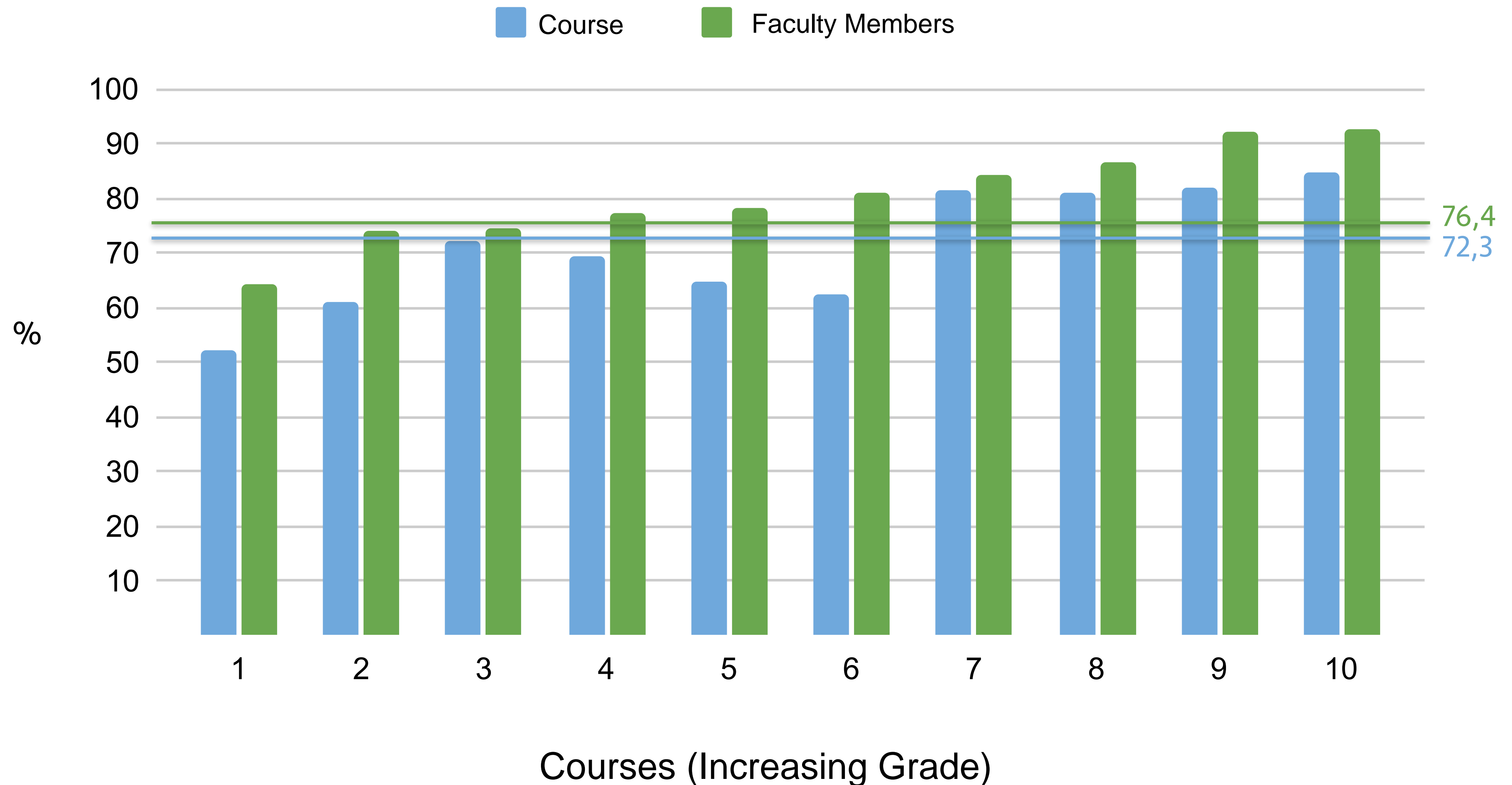
EVALUATION OF THE COMPULSORY COURSES IN THE 1st YEAR

Grade (in %) in the evaluations of courses and faculty members in the compulsory courses of the **1st year of studies**, during the academic year **2019-2020**.



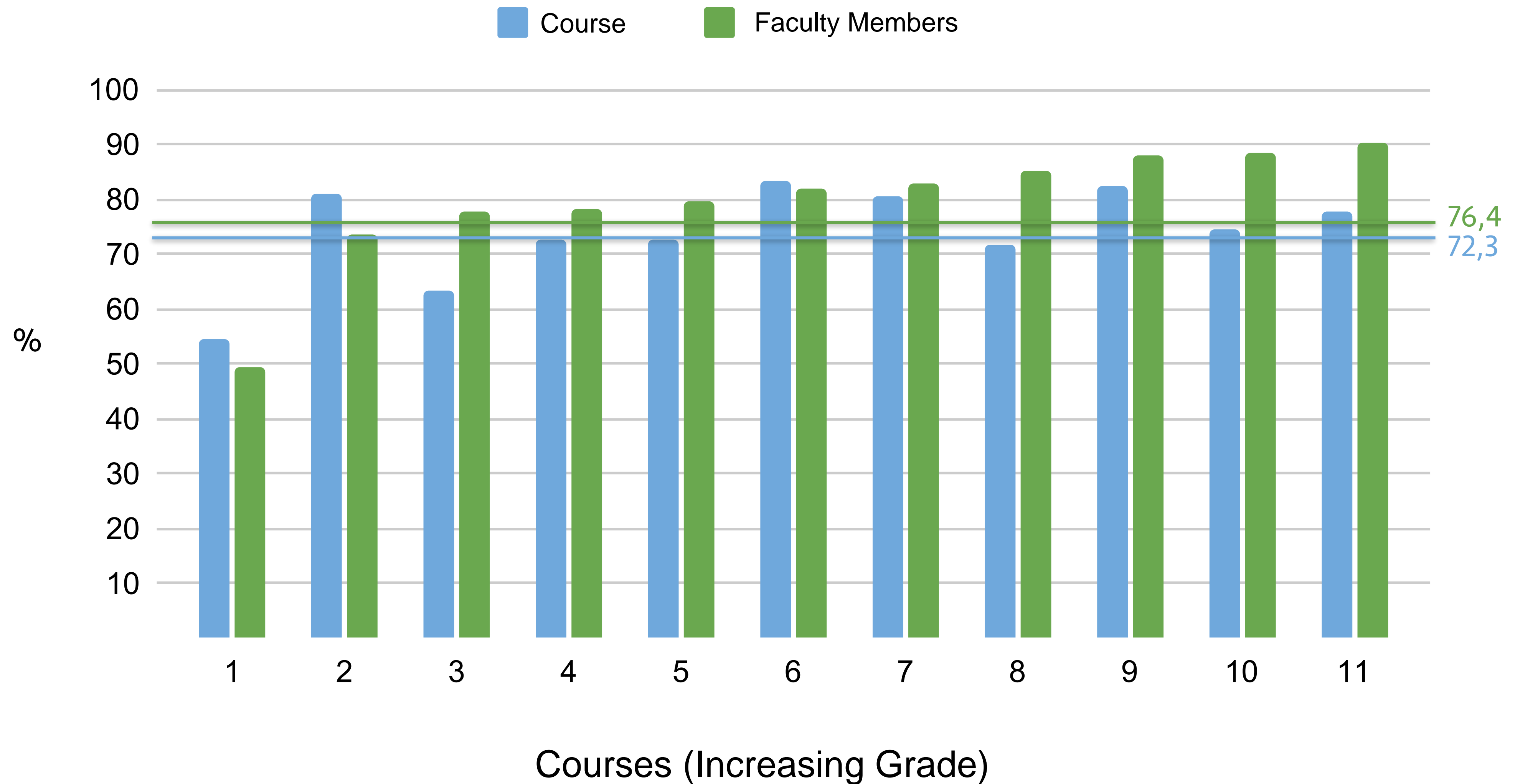
EVALUATION OF THE COMPULSORY COURSES IN THE 2nd YEAR

Grade (in %) in the evaluations of courses and faculty members in the compulsory courses of the **2nd year of studies**, during the academic year **2019-2020**.



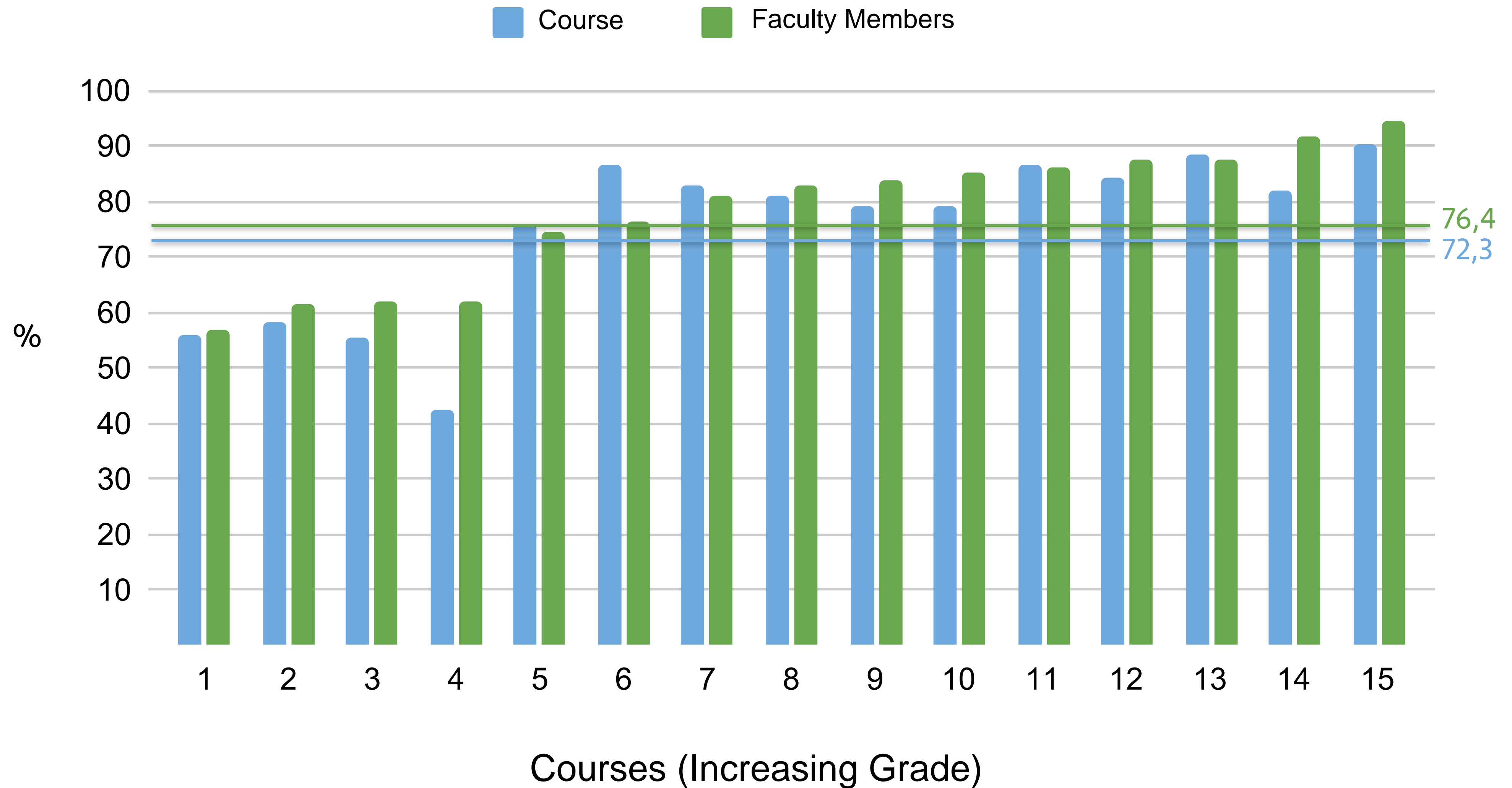
EVALUATION OF THE COMPULSORY COURSES IN THE 3rd YEAR

Grade (in %) in the evaluations of courses and faculty members in the compulsory courses of the **3rd year of studies**, during the academic year **2019-2020**.



EVALUATION OF THE MAIN ELECTIVE COURSES IN THE 4th YEAR

Grade (in %) in the evaluations of courses and faculty members in the compulsory courses of the **Main Elective courses in the 4th year of studies**, during the academic year **2019-2020**.



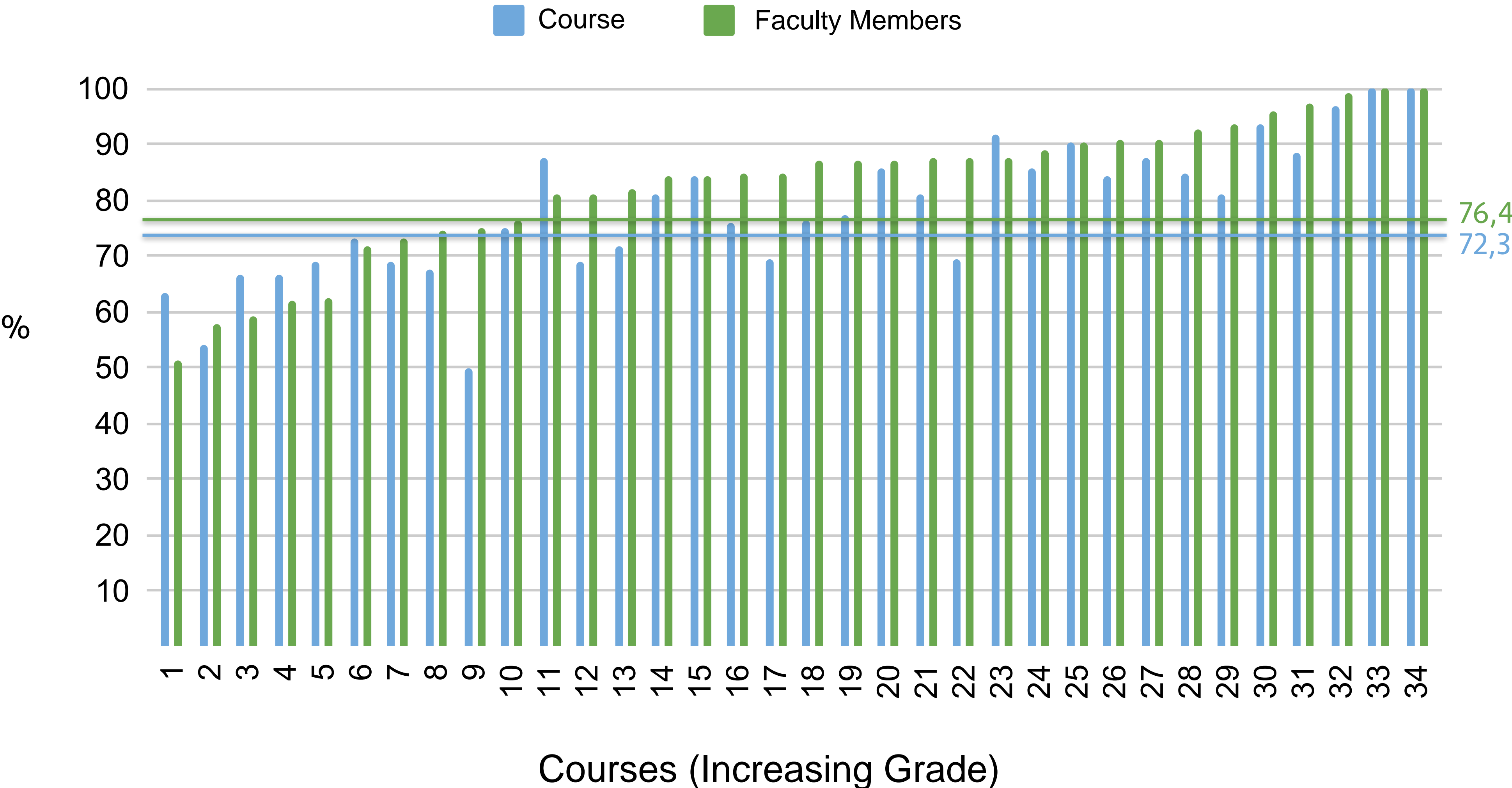
EVALUATION OF THE GENERAL ELECTIVE COURSES IN THE 4th YEAR

Grade (in %) in the evaluations of courses and faculty members in the compulsory courses of the **General Elective courses in the 4th year of studies**, during the academic year **2019-2020**.



EVALUATION OF THE SPECIALIZED ELECTIVE COURSES IN THE 4th YEAR

Grade (in %) in the evaluations of courses and faculty members in the compulsory courses of the **Specialized Elective courses in the 4th year of studies**, during the academic year **2019-2020**.



MAIN CONCLUSIONS

It is desirable:

- That the percentage of students participating in the evaluations increases further, with more regular reminders from faculties, especially in courses attended by a small number of students, where the current statistics cannot be trusted.
- That the number of courses that are evaluated increases significantly.
- That the average evaluation grade given to courses and faculty members improves, so that there is a smaller spread between the lowest and highest grades, especially in the first year of studies.
- More specific comments, especially in courses with low evaluation grades, will be forwarded to the Head of the Department, in order for positive measures to be taken.